

SQA-V *Gold* Sperm Quality Analyzer

The SQA-V *Gold* is an analytical medical device that performs a complete quantitative evaluation of semen quality and semen parameters in less than 2 minutes. This high performance analyzer incorporates technology in electro-optics, computer algorithms and video microscopy to provide a quick, precise and accurate automated semen analysis.

*Automated
Semen Analysis
in less than
2 minutes*

Features

- Runs fresh, frozen, washed and post-vasectomy samples
- Disposable testing capillary
- LIS interface option for data transfer
- PC compatible with export function
- V-Sperm™ *Gold* software included
- FDA and CE certified
- QC: Self-testing, self-calibrating. Runs latex beads or stabilized sperm
- Visualization system (x300 & x500)

Automated Test Results

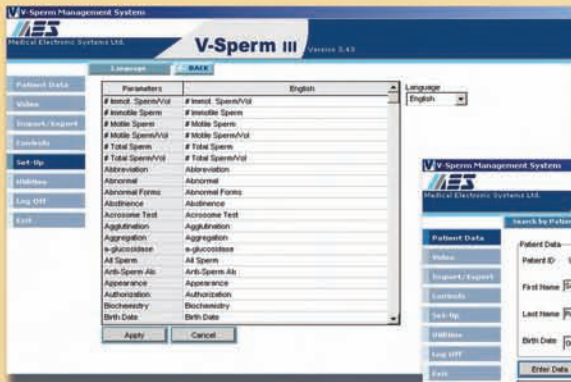
- Sperm Concentration
- % Motility expressed as total and a,b,c and d
- Rapid Progressive Motility (a)
- Slow Progressive Motility (b)
- Non-progressive Motility (c)
- Immotility (d)
- % Normal Morphology
- Motile Sperm Concentration
- Progressively Motile Sperm Concentration
- Functional Sperm Concentration
- Average Velocity
- Sperm Motility Index

Dynamic Range

DYNAMIC RANGE OF THE SQA-V <i>Gold</i>			
SAMPLE	SPERM CONC.	MSC	Motility
FRESH	2-400 or < 2 M/ml	0.2-400 or <0.2 M/ml	0-100%
WASHED	2-200 or < 2 M/ml	0.2-200 or <0.2 M/ml	0-100%
FROZEN	Not reported	0.2-200 or <0.2 M/ml	Not reported
POSTVASECTOMY	Manual Input	0-30 Sperm/Scan	Not reported



V-Sperm™ Gold



V-Sperm™ Gold is a software package that is included with every SQA-V Gold and greatly enhances the data management, storage and video capabilities of the system.

SQA-V Performance Claims

Specificity

- Concentration: 85%
- % Motility: 80%
- % Normal Morphology (WHO 3rd): 65%
- Postvasectomy: 95% of motile cells detected

Sensitivity

- Concentration: 90%
- % Motility: 85%
- % Normal Morphology (WHO 3rd): 85%

Correlation to Manual Method

- Concentration: 0.9
- % Motility: 0.85
- % Normal Morphology (WHO 3rd): 0.65

Features

- Import patient and control data from the SQA-V Gold
- Save patients test results with video clips or still images attached
- Save, view and graph patient and control test results
- View real time semen samples from the SQA-V Gold on a PC screen
- Optional language settings
- Normal ranges for testing parameters can be set by the user
- Set up authorized users and automatically track user updates
- Password/security

System Requirements

- PC: 1 GHz processor, Pentium 3, RAM: 256 MB
- Monitor: 15" color
- AGP-video display card with at least 16 MB of RAM memory
- Video color: At least 16 bit (65,535)
- CD ROM drive
- 10 MB free hard disk space for image capturing (approx. 10,000 clips)
- Video resolution: Minimum 640 x 480
- Operating system compatibility: Windows XP, Windows Vista
- Ports: One serial; two USB ports
- MS Excel/Word